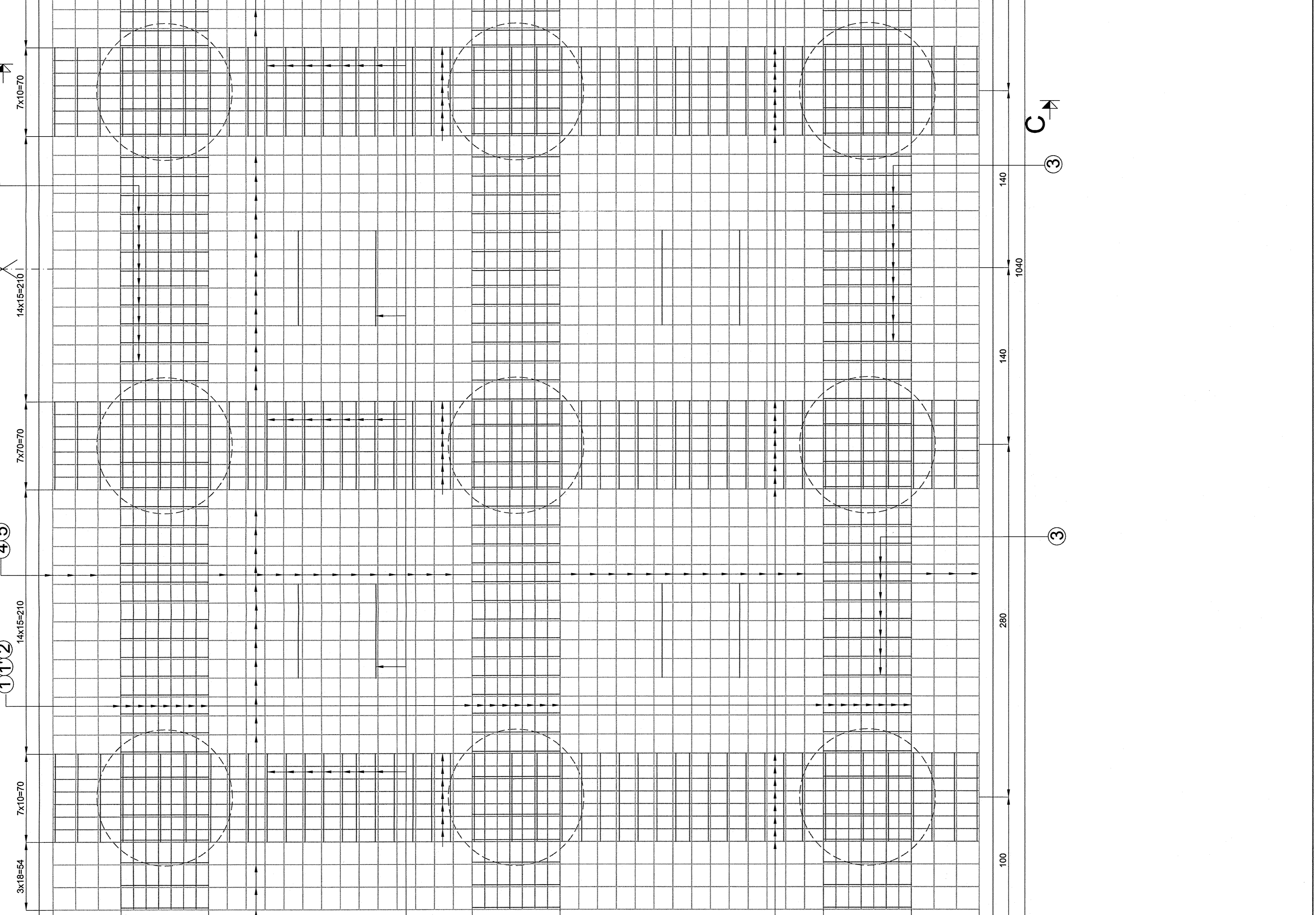
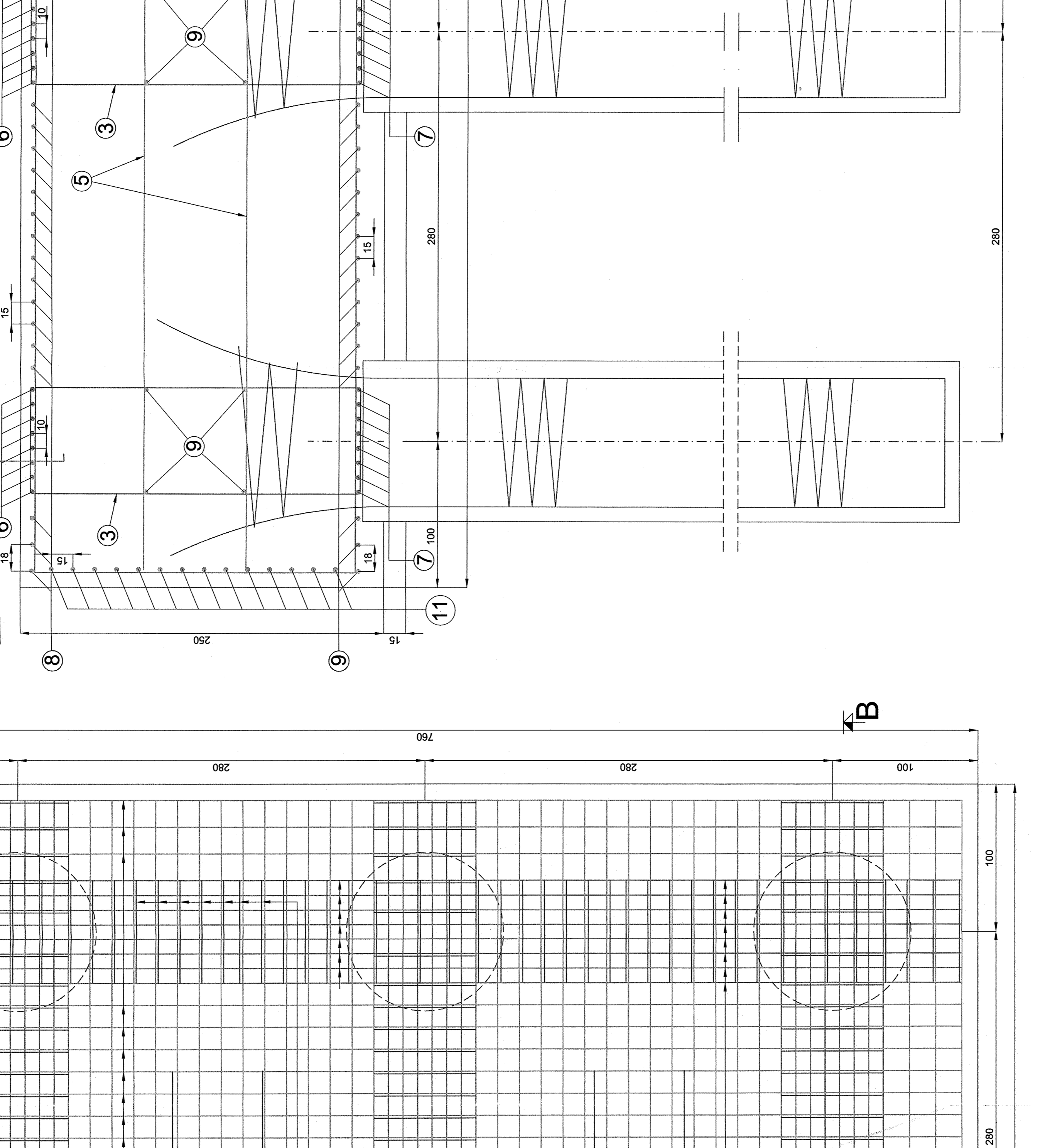


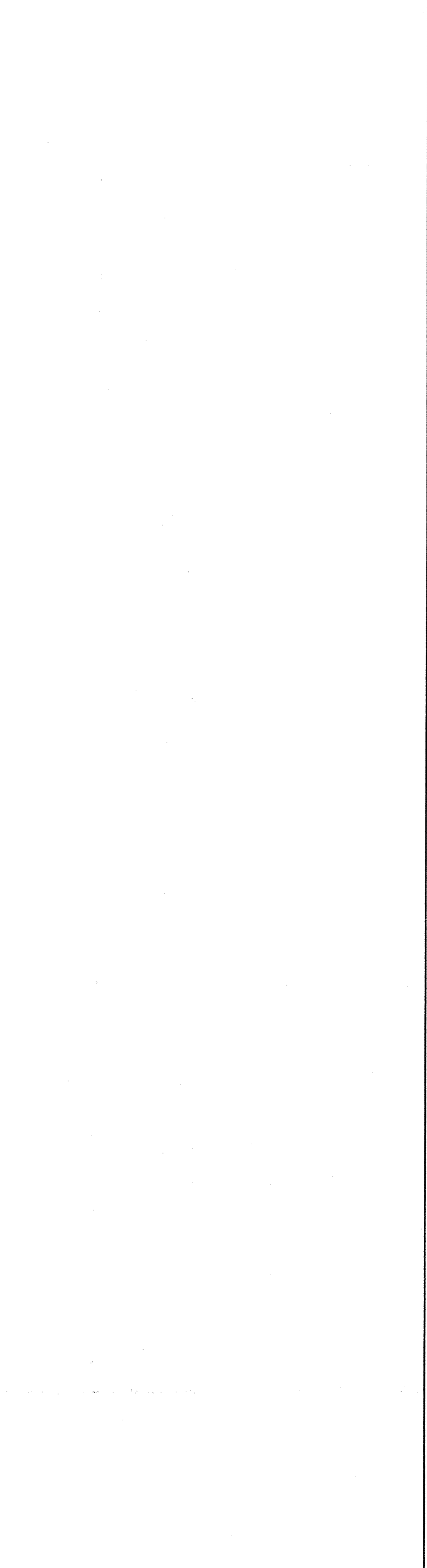
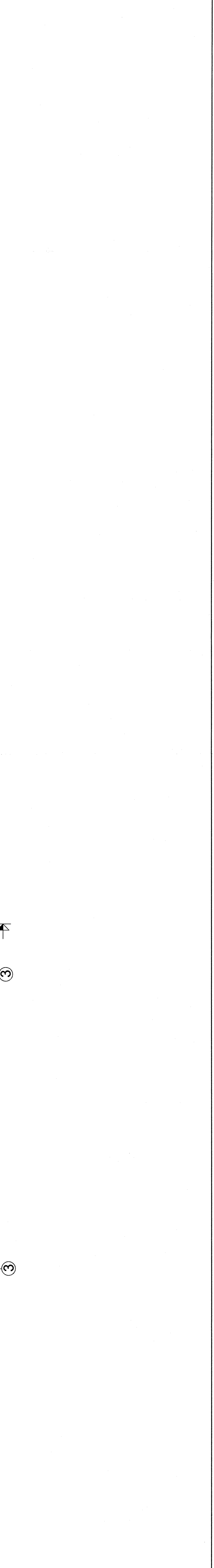
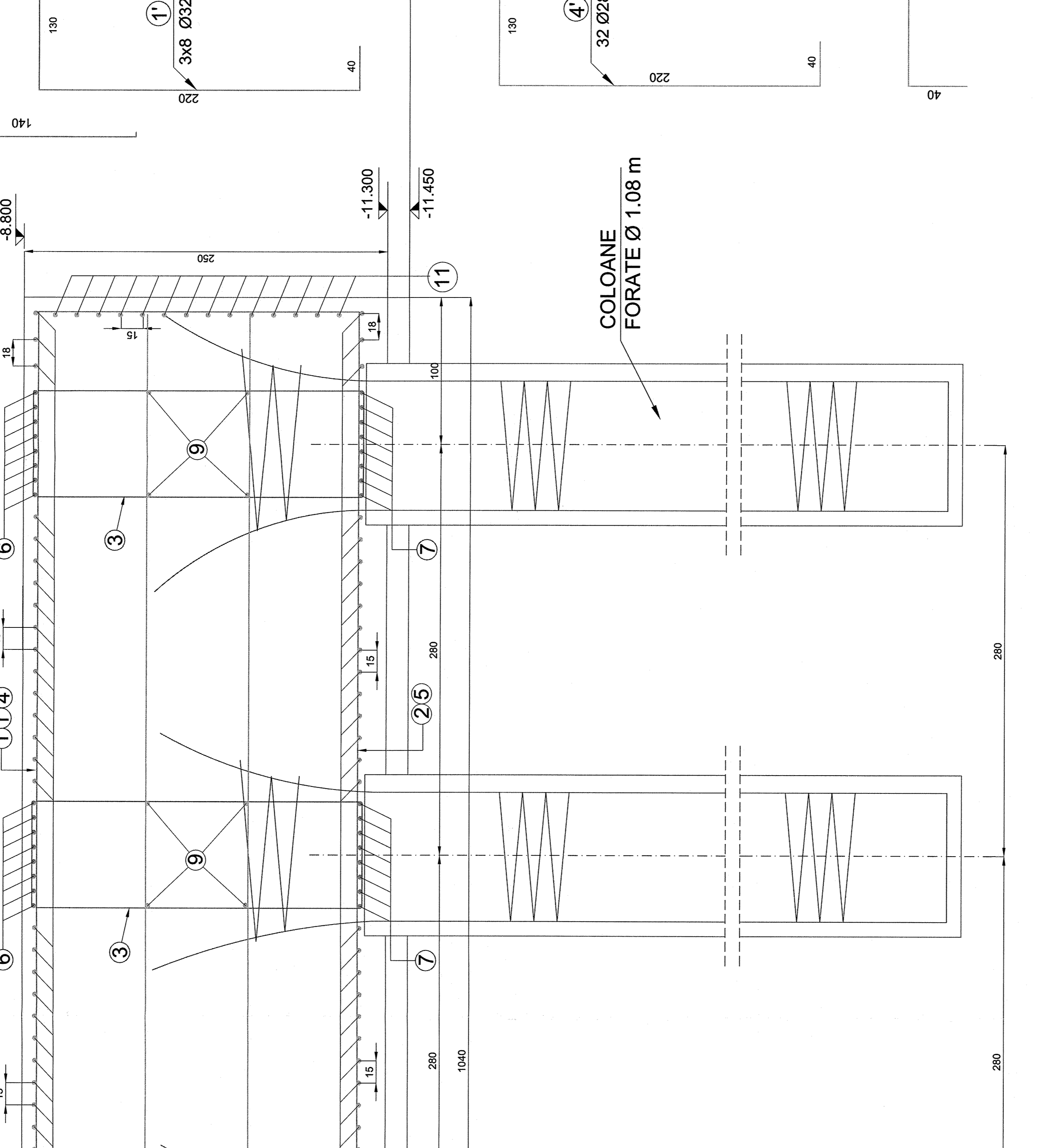
VEDERE A - A
VIEW A - A
Sc. 1:20



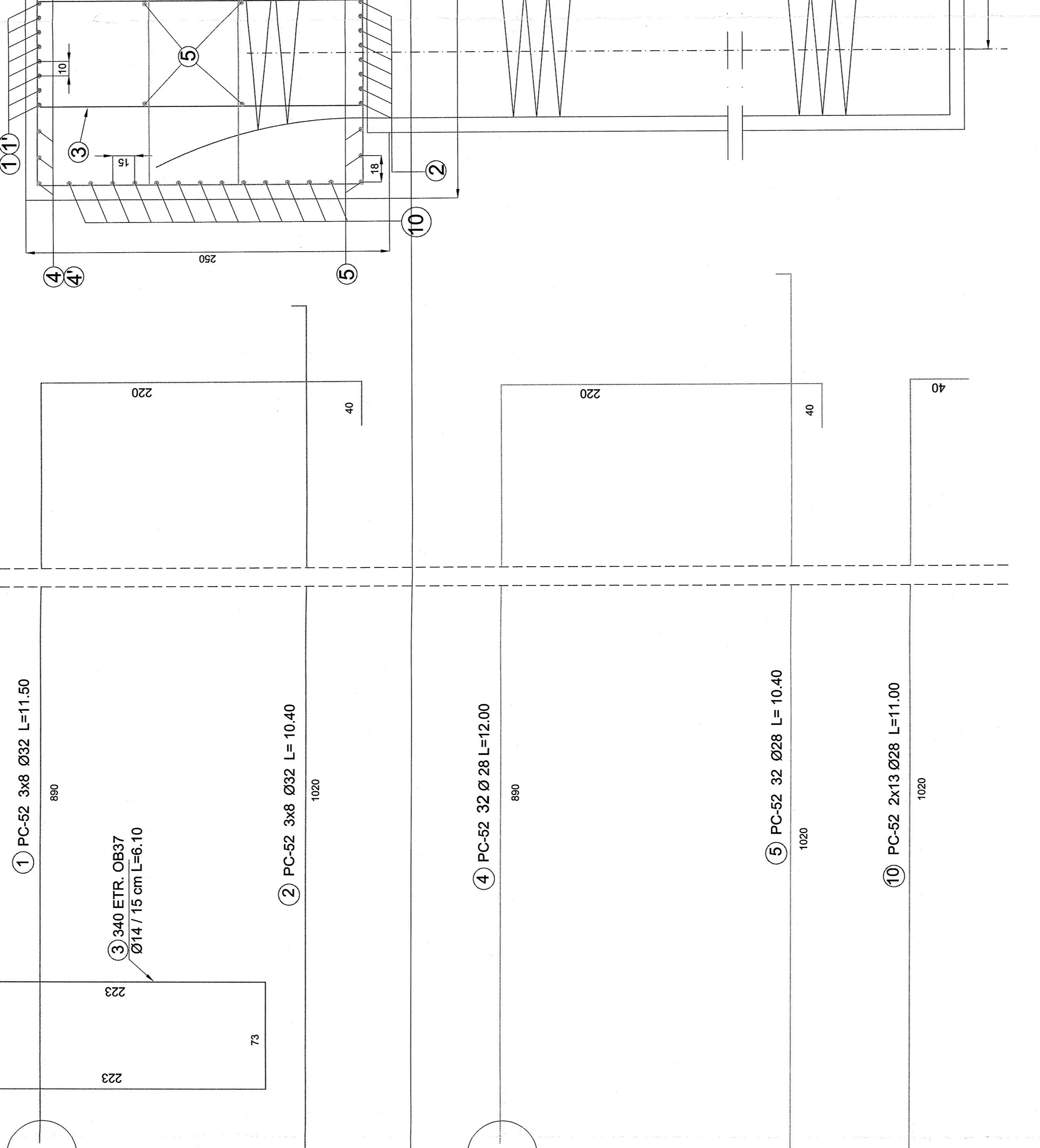
SECTIUNEA B - B
SECTION B - B
Sc. 1:20



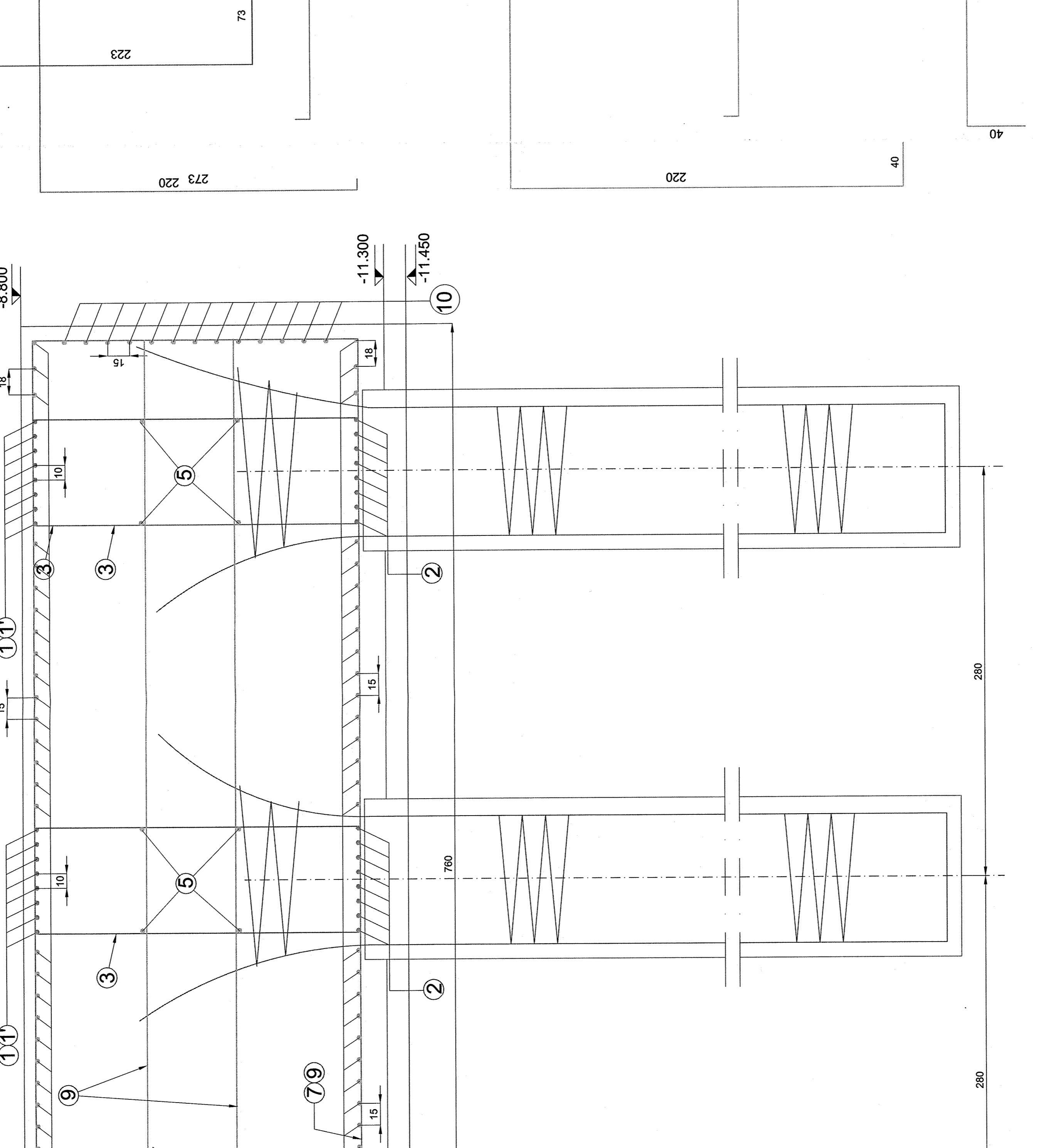
SECTIUNEA C - C
SECTION C - C
Sc. 1:20



ARMATURA TRANSVERSALA
RADIER CULEEI C2-I
CROSS BARS FOUNDATION
FRAME ABUTMENT C2-I



ARMATURA LONGITUDINALA
RADIER CULEEI C2-I
LONGITUDINAL BARS FOUNDATION
FRAME ABUTMENT C2-I

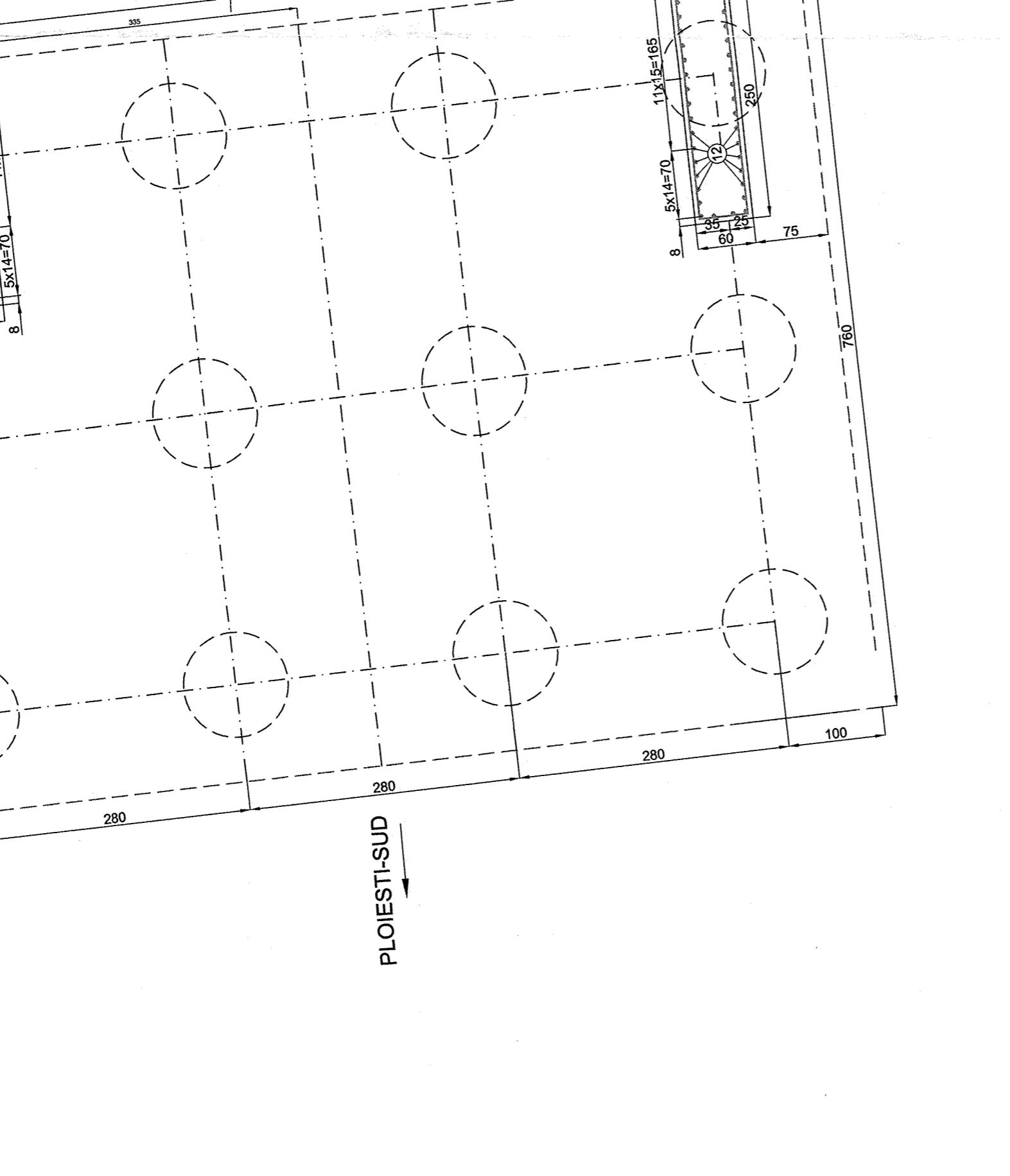


EXTRAS ARMATURA RADIER CULEEI C2-I (BIC RADIER)
NECESSARY OF REINFORCEMENT FOR ABUTMENT C2-I
FOUNDATION FRAME (FOUNDER PLAN)

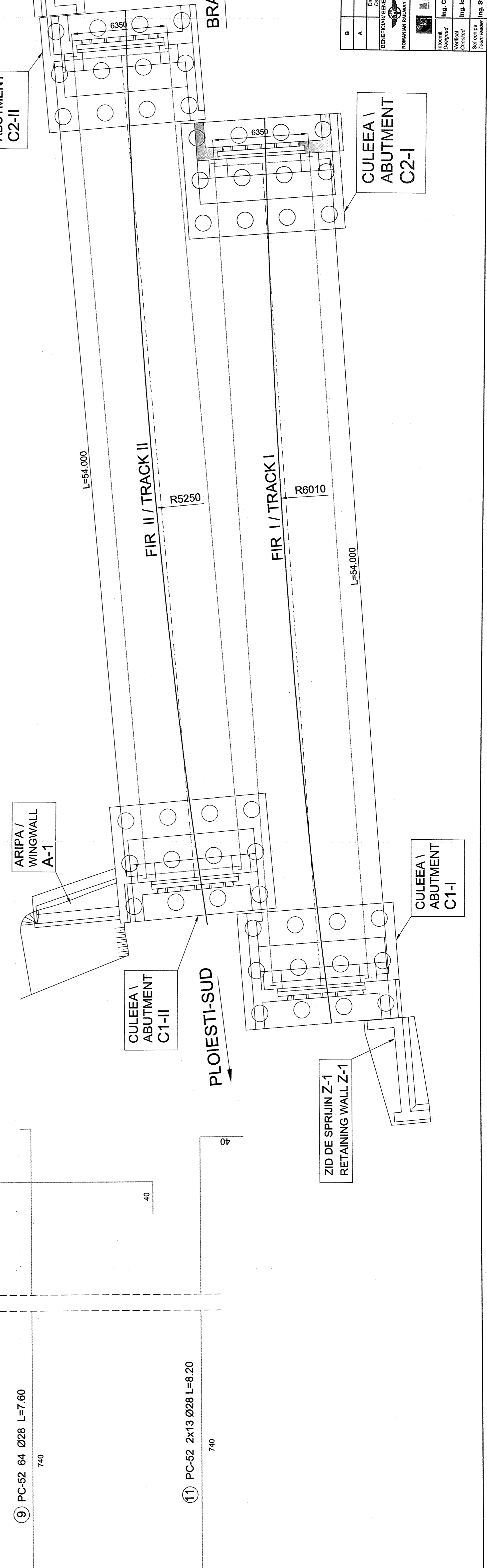
MARKA	DIAMETRU (MILIMETRI)	LUNGIME	NUMAR	DIAMETRU (MILIMETRI)
1	32	24	11,50	0,13
2	32	24	3,50	0,14
3	14	340	6,10	0,14
4	28	32	11,50	0,14
5	28	32	11,50	0,14
6	28	34	6,10	0,14
7	32	32	12,00	0,14
8	32	32	12,00	0,14
9	28	84	7,60	0,14
10	28	28	11,00	0,14
11	28	28	6,20	0,14
12	14	78	1,60	0,14

Total lungimi / diametri (m)	2074	122	2512	1247
Masa / metri cazi	1,208	1,208	4,834	6,313
Masa armatura / m	2,505	2,505	1,505	4,255
Masa constructie / m	2,505	1,505	2,020	7,950

POZITIA MUSTATILOR MARCA 12
LA RADIERUL CULEEI C2-I
BARS 12 POSITION AT ABUTMENT
C2-I FOUNDATION FRAME
Sc. 1:50



SCHEMA GENERALA POD
BRIDGE GENERAL SCHEME



NOTA:

1. POZITIA MUSTATILOR (MARCA 12) ESTE PREZENTATA SI IN PLANSA DE ARMARE A ELEVATIEI CULEEI C2-I
2. CARTELE E BARELOR LONGITUDINALE ALE CARCASEI COLOANELOR SE VOR RASFRATA RADIAL IN INTERIORUL CARCASEI RADIERULUI.

NOTE:

1. THE BARS 12 POSITIONS ARE ALSO GIVEN IN THE ABUTMENT C2-I ELEVATION REINFORCEMENT PLAN
2. THE ENDS OF THE LONGITUDINAL BARS FROM THE PILES WILL BE DISPERSED RADIALY INSIDE THE FOUNDATION FRAME